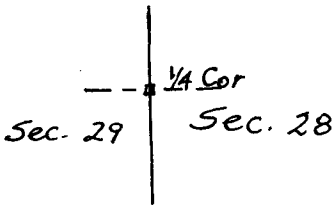


CERTIFIED LAND CORNER RECORDATION

T17N, R60W

DESCRIPTION OF CORNER EVIDENCE FOUND, AND ORIGINAL RECORD (If known)

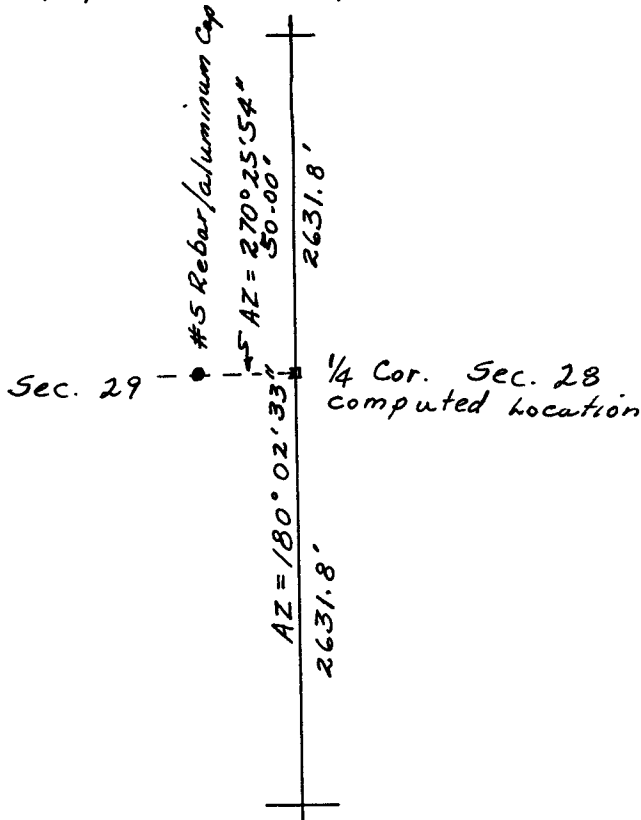
No Monument found. The location was computed by single proportional measurements.



DESCRIPTION OF MONUMENT AND ACCESSORIES ESTABLISHED TO PERPETUATE THE ORIGINAL LOCATION OF THIS CORNER:

#5 Rebar with aluminum cap was set on the East- West Centerline of Section 29 50 feet west of the computed Corner location.

SKETCH, WITH COURSE AND DISTANCE TO ADJACENT CORNER IF DETERMINED IN THIS SURVEY. (May Sketch or Paste Reproduction on Reverse Side.)



I, Edward C. Fry certify that I have carefully performed or reviewed the work done on the diagrammed corner as reported on this recordation form and approve the same.

Signature of Surveyor: Edward C. Fry

Wyo. # 662 Registration No.

STATE OF WYOMING, Office of Clerk and Recorder, County of Saratoga

This "corner record" was filed for record on the 9 day of Aug, 1977, was noted on the cross-index plat and is assigned page No. _____, in book No. _____.

County Official: James C. Whitehead

Cross Index No.	T-9	T.	17	R.	60	Mer.
		T.		R.		Mer.
		T.		R.		Mer.
		T.		R.		Mer.
		T.		R.		Mer.
		T.		R.		Mer.
		T.		R.		Mer.